

The Parish of The Good Shepherd Dover & Aylesham

Our Building Project has got to the stage where we need to tell you more about a possible New Hall beside St. Paul's

Over the next few months we need to have separate debates about all the four strands in the project.

Now is the time to talk about the Hall at St. Paul's.
As the geography of the site demands it is built first.

This is an exercise in bringing everyone into debates in manageable chunks.

Nothing is decided.

The Diocesan Authorities are fully involved in the discussions and will be accompanying us as we move the project forward.

The Archbishop has made two requests:

We keep the staff in the Finance Office & those running the Diocesan Estate fully informed & that Fr. Jeff does not retire until the project is completed.

Now is the time to talk seriously about the Hall.

You will see from the plan on the next page our architect, Charles Lynch, has suggested we build the new hall to the right of St. Paul's and keep part of the old hall for use by the Scouts, groups like the AA and the small working parties the council would love us to host if we had adequate access for the disabled.

Things to Note

Everyone needs to understand we are engaging in a process.

We are sharing the draft site plan as it is time you were all brought into the picture. If the general view, after some discussion, is these proposals are worth looking at further, we will need to approach the planning people.

Although we have the systems in place to look for grants, the questions about finance, whether we can get enough money to supplement what we have already, only comes if or when we get planning permission.

There is one important fact I want everyone to take on board at this moment though. The flats, which we will tell you more about at a later date, would not be financed by the parish.

There is one other thing. This Special Edition to the newsletter is about the general idea. Other Special Editions will follow, partly according to what is asked or because the committee running the project either want opinions about a particular aspect of the project or to tell you how they are getting on.

Attached to the end of this Special Edition newsletter is a Questionnaire. You can download an electronic copy of it in Word format from our website <https://www.parihofthegoodshepherd.uk/newsletters/>

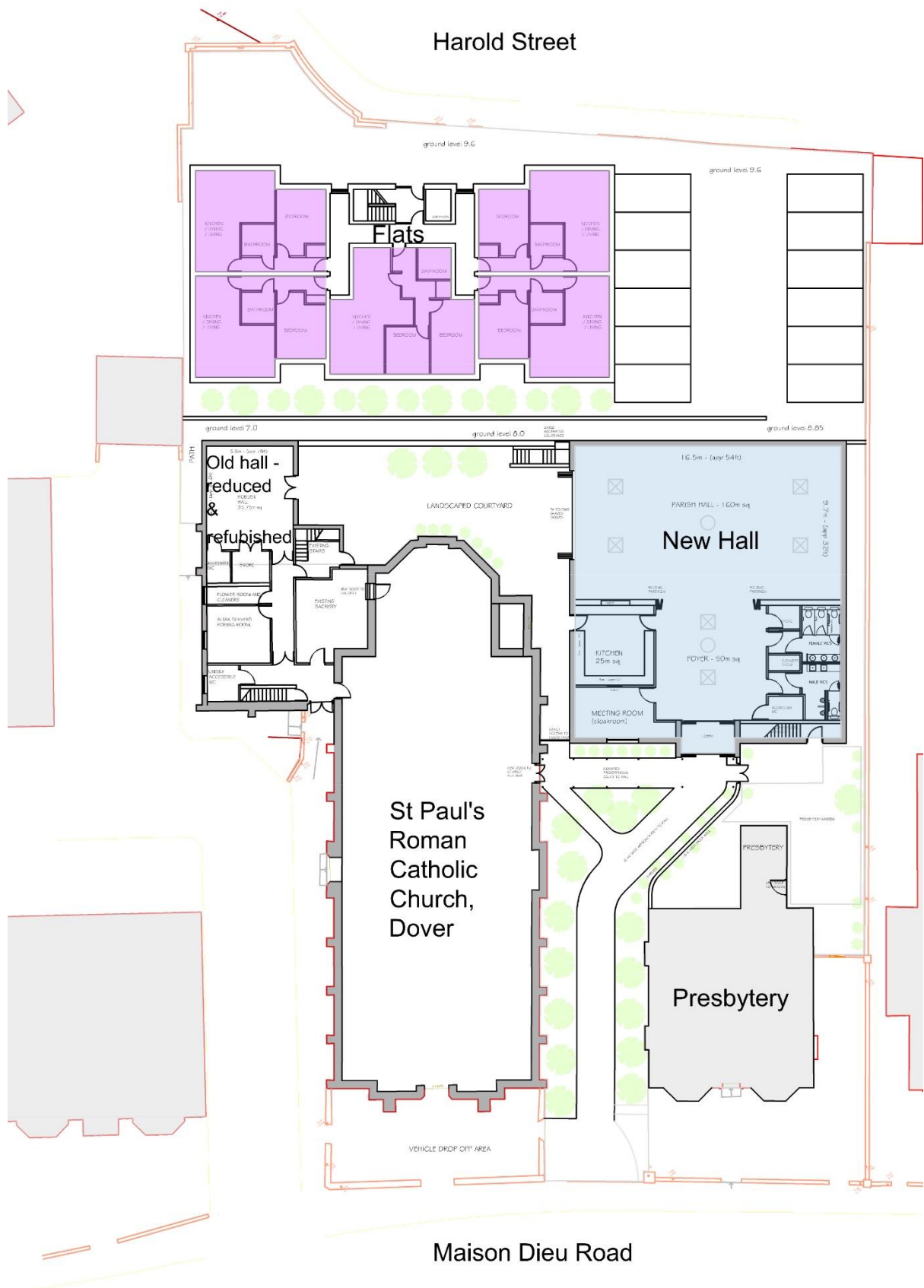
If you want to tell us what you think or want to ask a question, and we hope you will, please get in touch with Malcolm Fisher, email goodshepherddevelopment@gmail.com.

You can also email your completed questionnaire to Malcolm.



Malcolm Fisher
Health & Safety
& Co-ordinator
of Responses

The Plans





Fr Jeff Cridland
Parish Priest



Charles Lynch
Architect



Noel Beamish
Dover Outreach Centre



Mary Smye- Rumsby
Parish Secretary



Adrian Parkinson
Parish Finance Chair



Paul Smye-Rumsby
Building Maintenance
Officer



Keith Wells
Parish Council
Representative



Theresa Gordon
Representing St Paul's
Management Group



Carina Jarvie
Representing St Finbarr's
Management Group

Background

St Paul's Community Hall

St Paul's Church, Dover was built in 1868. It was designed in the 'Early English' style by Edward Pugin, the son of Augustus Welby Pugin (designer of 'Big Ben' and many aspects of the houses of Parliament). A boy's school was built adjacent to the church in 1872 and extended to include a girl's school in 1882 with an infant's school in 1889 which educated 170 children at the time.

The current 'hall' at St Paul's is essentially the original old school classrooms which were renovated some 40 years ago.

The hall space we have now is long and narrow with echoing acoustics; it is cold and uncomfortable and has to be accessed via a private corridor round the back of the Sacristy with steps at the end. All this makes the space virtually unusable, unwelcoming, un-lettable and an unwanted burden on the Parish. Some of the outbuildings at the rear have suffered from serious erosion of the brickwork to the point of being potentially unstable. Rising damp is a problem and there are numerous changes of level with steps all over the place. The cost of simply addressing the many problems would be considerable and many of the spaces are now totally impractical.

Consultation from last year confirmed that the Parish in general wants a hall space that is welcoming, accessible, flexible and large enough for the entire congregation to gather. A flexible, well-proportioned and well serviced space could suit many groups in the church and the wider society, from mothers and toddlers to Age UK, from keep fit and sports clubs to dance clubs, choirs and amateur dramatics and could even be used for after-Mass coffee mornings. There are many other potential uses as well.

A hall, such as the one which is proposed now, which is visible to the road, attractive and welcoming, could also be used to build better links to the community. The location, at the top of Pencester Road is within walking distance of the whole town centre which means it has the potential to be visible and to attract a lot of people.

A hall like this could be a real asset to the whole church family and could help build better links to the wider community by being a useful community asset.